

**Calcipressin 3 (DSCR1L2) Antibody (N-term)**  
**Purified Rabbit Polyclonal Antibody (Pab)**  
**Catalog # AP6310a****Specification**

---

**Calcipressin 3 (DSCR1L2) Antibody (N-term) - Product Information**

Application	WB,E
Primary Accession	<a href="#">Q9UKA8</a>
Reactivity	Human, Mouse
Host	Rabbit
Clonality	Polyclonal
Isotype	Rabbit IgG
Calculated MW	27492
Antigen Region	19-51

**Calcipressin 3 (DSCR1L2) Antibody (N-term) - Additional Information****Gene ID** 11123**Other Names**

Calcipressin-3, Down syndrome candidate region 1-like protein 2, Myocyte-enriched calcineurin-interacting protein 3, MCIP3, Regulator of calcineurin 3, RCAN3, DSCR1L2

**Target/Specificity**

This Calcipressin 3 (DSCR1L2) antibody is generated from rabbits immunized with a KLH conjugated synthetic peptide between 19-51 amino acids from the N-terminal region of human Calcipressin 3 (DSCR1L2).

**Dilution**

WB~~1:1000

E~~Use at an assay dependent concentration.

**Format**

Purified polyclonal antibody supplied in PBS with 0.09% (W/V) sodium azide. This antibody is prepared by Saturated Ammonium Sulfate (SAS) precipitation followed by dialysis against PBS.

**Storage**

Maintain refrigerated at 2-8°C for up to 2 weeks. For long term storage store at -20°C in small aliquots to prevent freeze-thaw cycles.

**Precautions**

Calcipressin 3 (DSCR1L2) Antibody (N-term) is for research use only and not for use in diagnostic or therapeutic procedures.

**Calcipressin 3 (DSCR1L2) Antibody (N-term) - Protein Information****Name** RCAN3

**Synonyms** DSCR1L2

**Function** Inhibits calcineurin-dependent transcriptional responses by binding to the catalytic domain of calcineurin A. Could play a role during central nervous system development (By similarity).

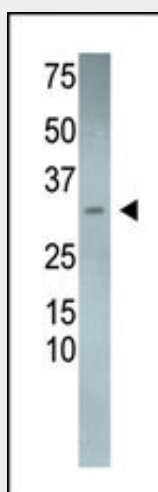
**Tissue Location**

Highest expression in heart, skeletal muscle kidney, liver and peripheral blood leukocytes. Lower expression in all other tissues

**Calcipressin 3 (DSCR1L2) Antibody (N-term) - Protocols**

Provided below are standard protocols that you may find useful for product applications.

- [Western Blot](#)
- [Blocking Peptides](#)
- [Dot Blot](#)
- [Immunohistochemistry](#)
- [Immunofluorescence](#)
- [Immunoprecipitation](#)
- [Flow Cytometry](#)
- [Cell Culture](#)

**Calcipressin 3 (DSCR1L2) Antibody (N-term) - Images**

The anti-DSCR1L2 Pab (Cat. #AP6310a) is used in Western blot to detect DSCR1L2 in mouse heart tissue lysate.

**Calcipressin 3 (DSCR1L2) Antibody (N-term) - Background**

DSCR1L2 inhibits calcineurin-dependent transcriptional responses by binding to the catalytic domain of calcineurin A, and may play a role during central nervous system development. Highest expression occurs in heart, skeletal muscle kidney, liver and peripheral blood leukocytes.